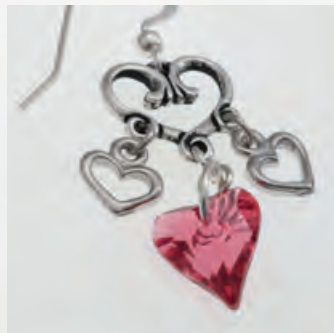


CREATE  
YOUR STYLE  
with SWAROVSKI ELEMENTS



CREATE YOUR STYLE  
MINI PROJECTS  
VALENTINE'S DAY

CREATE  
YOUR STYLE  
with SWAROVSKI ELEMENTS



MINI PROJECT VALENTINE'S DAY  
**FLOATING BLUE HEART  
EARRINGS**

Materials

SWAROVSKI ELEMENTS

| Product Group | Article No. | Amount | Size | Color                | Color Code |
|---------------|-------------|--------|------|----------------------|------------|
| Pendants      | 6215        | 2 pcs. | 18mm | Crystal Bermuda Blue | 001 BBL    |

Supplies: 2 Tierra Cast Beaded Heart Frame (#94-5637) 6" 24 gauge silver wire 2 silver ear wires

Instructions

- STEP 1: Cut 24 gauge wire into two equal pieces using wire cutters.
- STEP 2: String Heart Pendant article 6215 from the SWAROVSKI ELEMENTS assortment onto one wire.
- STEP 3: String the wire ends through bottom loop of ear wire leaving ½"-1" of wire for Heart Pendant to hang from depending on how long you want the earring to be.
- STEP 4: Wrap wire ends around the strands of wire to secure the Pendant and ear wire.
- STEP 5: Open jump ring with pliers and attach to Tierra Cast beaded heart frame and attach to wire. Close jump ring to secure.
- STEP 6: Repeat steps 2 - 5 for other earring.

CREATE  
YOUR STYLE  
with SWAROVSKI ELEMENTS



MINI PROJECT VALENTINE'S DAY  
**TRIPLE VINE HEART  
EARRINGS**

Materials

SWAROVSKI ELEMENTS

| Product Group | Article No.             | Amount | Size  | Color       | Color Code |
|---------------|-------------------------|--------|-------|-------------|------------|
| Pendants      | 6240 Wild Heart Pendant | 2 pcs. | 12 mm | Indian Pink | 289        |

Supplies: 2 Tierra Cast Vine Heart Links (#94-3094)      4 Tierra Cast Open Heart Charms (#94-2095)  
2 silver ear wires      6 silver 5mm jump rings  
2 silver 8mm jump rings

Instructions

- STEP 1: Open all 5 mm and 8mm jump rings.
- STEP 2: Attach a 5 mm jump ring to one of the side loops on the Tierra Cast Vine Heart Link and to one of the Tierra Cast Open Heart Charms. Close jump ring.
- STEP 3: Repeat for loop on other side of Tierra Cast Vine Heart Link.
- STEP 4: Attach a 5mm open jump ring to the bottom center loop of the Tierra Cast Vine Heart Link and close jump ring. Attach an open 8mm jump ring to the closed 5mm jump ring and attach to the Wild Heart Pendant from the SWAROVSKI ELEMENTS assortment. Close jump ring to secure.
- STEP 5: Open loop at bottom of ear wire with pliers and attach to top loop of Tierra Cast Vine Heart Link. Close loop to secure.
- STEP 6: Repeat steps 2 - 5 for other earring.



CREATE  
YOUR STYLE  
with SWAROVSKI ELEMENTS

MINI PROJECT VALENTINE'S DAY  
RADIANT HEART  
EARRINGS

Materials

SWAROVSKI ELEMENTS

| Product Group | Article No.             | Amount | Size  | Color             | Color Code |
|---------------|-------------------------|--------|-------|-------------------|------------|
| Pendants      | 6240 Wild Heart Pendant | 2 pcs. | 12 mm | Tanzanite         | 539        |
| Beads         | 5328 XILION Bicone      | 2 pcs. | 4 mm  | Provence Lavender | 283        |

Supplies: 2 Tierra Cast Radiant Heart Links (#94-3128)      6" 24 gauge wire      2 silver ear wires

Instructions

- STEP 1: Cut 24 gauge wire into two equal pieces using wire cutters.
- STEP 2: String Wild Heart Pendant article 6240 the SWAROVSKI ELEMENTS assortment onto one wire. Adjust wire on Pendant so that one end is about 1/3 the length of the other end. Wrap short wire end around long end several times making a small loop between top of Pendant and wrapped wire.
- STEP 3: String one Swarovski XILION Bicone Bead onto long end of wire and feed wire through the loop in bottom of one of the Tierra Cast Radiant Heart Links.
- STEP 4: Wrap wire end around the top of the bead to secure.
- STEP 5: Open loop at bottom of ear wire with pliers and attach to top loop of Tierra Cast Radiant Heart Link. Close loop to secure.
- STEP 6: Repeat steps 2 - 5 for other earring.



MINI PROJECT VALENTINE'S DAY  
**RED MAGMA WILD HEART  
DROP EARRINGS**

Materials

SWAROVSKI ELEMENTS

| Product Group | Article No.             | Amount | Size  | Color                  | Color Code |
|---------------|-------------------------|--------|-------|------------------------|------------|
| Pendants      | 6240 Wild Heart Pendant | 2 pcs. | 17 mm | Crystal Red Magma      | 001 REDM   |
| Pearls        | 5810                    | 2 pcs. | 3 mm  | Crystal Bordeaux Pearl | 001 538)   |

Supplies: 2 Tierra Cast Vine Heart Links (#94-3093) 6" 24 gauge wire 2 silver ear wires

Instructions

- STEP 1: Cut 24 gauge wire into two equal pieces using wire cutters.
- STEP 2: String Wild Heart Pendant article 6240 the SWAROVSKI ELEMENTS assortment onto one wire. Adjust wire on Pendant so that one end is about 1/3 the length of the other end. Wrap short wire end around long end several times creating a small loop between top of Pendant and coiled wire.
- STEP 3: String one Swarovski Crystal Pearl onto long end of wire and feed wire through the loop in bottom of one of the Tierra Cast Vine Heart Links.
- STEP 4: Wrap wire end around the top of the pearl to secure.
- STEP 5: Open loop at bottom of ear wire with pliers and attach to top loop of Tierra Cast Vine Heart Link. Close loop to secure
- STEP 6: Repeat steps 2 - 5 for other earring.

# CREATE YOUR STYLE

with SWAROVSKI ELEMENTS



## MINI PROJECT VALENTINE'S DAY WILD HEART CHANDELIERS

### Materials

#### SWAROVSKI ELEMENTS

| Product Group | Article No.             | Amount | Size  | Color       | Color Code |
|---------------|-------------------------|--------|-------|-------------|------------|
| Pendants      | 6240 Wild Heart Pendant | 2 pcs. | 17 mm | Rosaline    | 508        |
| Pendants      | 6240 Wild Heart Pendant | 2 pcs. | 12 mm | Tanzanite   | 539        |
| Pendants      | 6240 Wild Heart Pendant | 2 pcs. | 12 mm | Indian Pink | 289        |
| Pendants      | 6240 Wild Heart Pendant | 2 pcs. | 12 mm | Light Rose  | 223        |

Supplies: 4 Tierra Cast Spiral Hearts (#94-2074)      3" open chain      2 silver ear wires  
8mm jump rings – 6      6mm jump rings – 4      10mm jump rings – 2

### Instructions

- STEP 1: Cut chain in two equal pieces and open all jump rings using pliers.
- STEP 2: Attach one 10mm open jump ring to Wild Heart Pendant article 6240 17mm the SWAROVSKI ELEMENTS assortment and attach to the bottom link of one piece of chain. Close jump ring.
- STEP 3: Attach an open 8mm jump ring to one Swarovski Wild Heart Pendant 12mm Tanzanite and attach to the third link up from the bottom on the chain. Close jump ring.
- STEP 4: Attach an open 6mm jump ring to one of the Tierra Cast Spiral Hearts and attach to the link above the Wild Heart Pendant 12mm Tanzanite. Close jump ring.
- STEP 5: Attach an open 8mm jump ring to one Swarovski Wild Heart Pendant Indian Pink 12mm and attach to the link above the Spiral Heart. Close jump ring.
- STEP 6: Attach an open 6mm jump ring to one of the Tierra Cast Spiral Hearts and attach to the link above the Swarovski Wild Heart Pendant Indian Pink. Close jump ring.

Continuation on next page

[“Wild Heart Chandeliers”, page 2](#)

- STEP 7: Attach a third open 8mm jump ring to the Wild Heart Pendant 12mm Rosaline and attach it to the link above the Spiral Heart added in step 6. Close jump ring.
- STEP 8: Open the loop on the bottom of the ear wire with pliers and attach to the top link of the chain. Close loop.
- STEP 9: Repeat steps 2 - 8 for other earring.



MINI PROJECT VALENTINE'S DAY  
**SUEDE RED MAGMA**  
**HEART PENDANT**

Materials

SWAROVSKI ELEMENTS

| Product Group | Article No.             | Amount | Size  | Color             | Color Code |
|---------------|-------------------------|--------|-------|-------------------|------------|
| Pendants      | 6240 Wild Heart Pendant | 1 pc.  | 37 mm | Crystal Red Magma | 001 REDM   |
| Beads         | 5040                    | 1 pc.  | 6 mm  | Crystal Red Magma | 001 REDM   |
| Beads         | 5328 XILION Bead        | 1 pc.  | 4 mm  | Crystal Red Magma | 001 REDM   |

Supplies: Silver Lobster Clasp – 1  
Fold-over crimp ends – 2  
6" 24 gauge silver wire  
16" Terracotta suede  
6 mm jump rings – 2

Instructions

- STEP 1: String the Wild Heart Pendant from the SWAROVSKI ELEMENTS assortment onto the 24" wire. Adjust wire on Pendant so that one end is about 1/3 the length of the other end. Wrap short wire end around long end several times making a small loop between top of Pendant and wrapped wire.
- STEP 2: String on the Swarovski Bead article 5040 6mm and then add the XILION Bead article 5328.
- STEP 3: Wrap wire end around wire above the last Bead forming a loop large enough to slide the suede through. Wrap the wire around top of last Bead several times to secure. Cut off any remaining wire.
- STEP 4: Slide suede through the loop made in step 3. Attach fold over clasps to ends of suede using flat nose pliers. Open jump rings and attach one to each side. Attach lobster clasp to jump ring on one side.



# CREATE YOUR STYLE

with SWAROVSKI ELEMENTS

## MINI PROJECT VALENTINE'S DAY HAPPY VALENTINE'S NECKLACE

### Materials

#### SWAROVSKI ELEMENTS

| Product Group | Article No.             | Amount | Size  | Color    | Color Code |
|---------------|-------------------------|--------|-------|----------|------------|
| Pendants      | 6240 Wild Heart Pendant | 1 pc.  | 37 mm | Rosaline | 508        |

Supplies: Silver Lobster Clasp – 1  
Fold-over crimp ends – 2  
1 Tierra Cast Spiral Heart (#94-2074)

4" 24 gauge silver wire  
18" Pink suede lace

6mm jump rings – 2  
18" Red suede lace

### Instructions

- STEP 1: Cut silver wire in two equal pieces and set aside.
- STEP 2: String the red and pink suede lace through the hole in the Wild Heart Pendant from the SWAROVSKI ELEMENTS assortment. Bring one pink and one red piece of lace together and wrap one of the silver wire pieces around both to secure. Repeat with other wire piece and other two pieces of suede on other side of Pendant.
- STEP 3: Attach a fold-over crimp end to both the red and pink suede lace ends on one side of necklace and then repeat for other side of necklace. Fold crimp ends over with flat nose pliers.
- STEP 4: Open both jump rings. Attach one to each fold over clasp. Attach the lobster clasp to one jump ring and the Tierra Cast Spiral Heart to the other. Close both to secure.



MINI PROJECT VALENTINE'S DAY  
TRIPLE HEART  
NECKLACE

### Materials

#### SWAROVSKI ELEMENTS

| Product Group  | Article No.             | Amount | Size  | Color    | Color Code |
|----------------|-------------------------|--------|-------|----------|------------|
| Pendant        | 6240 Wild Heart Pendant | 1 pc.  | 27 mm | Rosaline | 508        |
| Pendant        | 6240 Wild Heart Pendant | 1 pc.  | 17 mm | Rosaline | 508        |
| Pendant        | 6240 Wild Heart Pendant | 1 pc.  | 12 mm | Rosaline | 508        |
| Crystal Pearls | 5810                    | 3 pcs. | 3 mm  | Rosaline | 508        |

Supplies: Silver Lobster Clasp – 1  
Fold-over crimp ends – 2  
1 Tierra Cast Hammerton Ring (94-3095)

10" 22 gauge silver wire  
16" Red suede lace  
1 Tierra Cast 1¼" Radiant Ring (94-3112)

6mm jump rings – 2

### Instructions

- STEP 1: Cut silver wire in two equal pieces and set aside.
- STEP 2: String the red and pink suede lace through the hole in the Wild Heart Pendant from the SWAROVSKI ELEMENTS assortment. Bring one pink and one red piece of lace together and wrap one of the silver wire pieces around both to secure. Repeat with other wire piece and other two pieces of suede on other side of Pendant.
- STEP 3: String on one Swarovski Crystal Pearl 3 mm. Wrap wire end around the Tierra Cast 1¼" Radiant Ring and back around the wire on top of the Crystal Pearl. Wrap several times around top of pearl to secure and cut off remaining wire.
- STEP 4: Repeat this step with the Swarovski Wild Heart Pendant 17 mm attaching it to the top of the 1¼" Radiant Ring and to the "bottom" of the 1" Hammerton Ring.
- STEP 5: Repeat step 3 once more and attach the wire and Pendant to the top of the 1" Hammerton Ring and center of red suede lace.
- STEP 6: Attach fold-over crimps end to both ends of red suede lace using flat nose pliers.
- STEP 7: Open both jump rings. Attach one to each fold over clasp and attach the lobster clasp to one jump ring. Close both jump rings to secure.